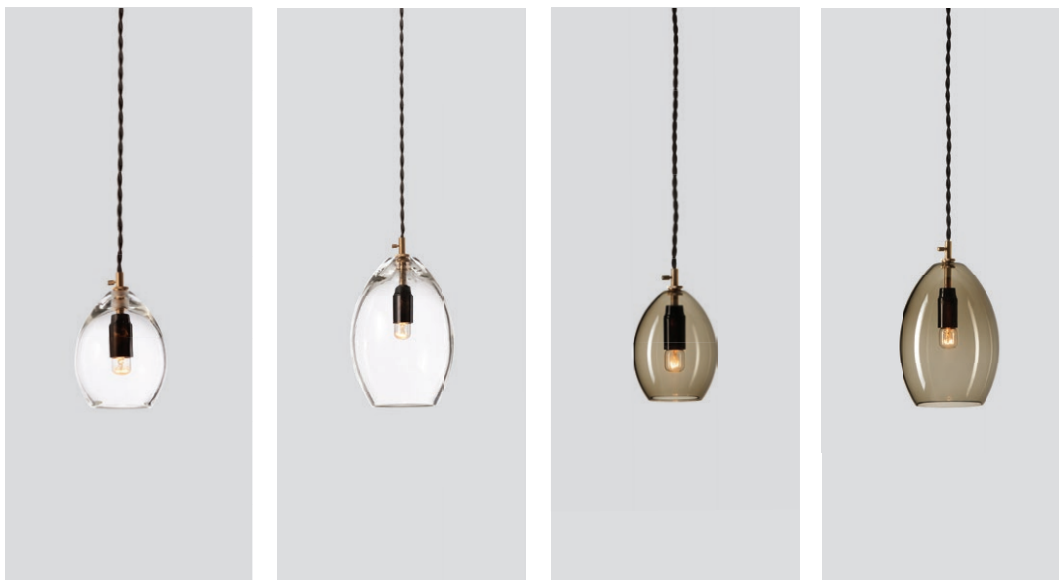


Unika



Unika small
– Item no. 530

Unika large
– Item no. 531

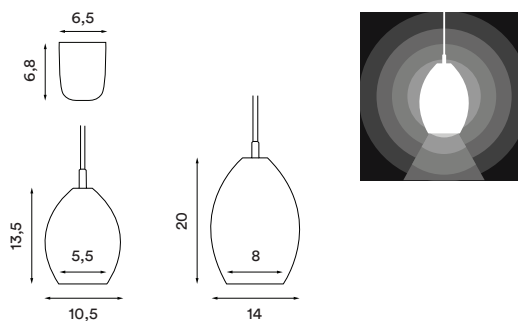
Unika small grey
– Item no. 535

Unika large grey
– Item no. 536

Design: Anne Louise Due de Fønss
& Anders Lundqvist
Year: 2012
Type: Pendant lamp

Dimensions and light direction

Shade material: Mouth blown glass
Shade colour: Transparent or grey
Body material: Brass
Wire: Black twisted fabric wire, 250 cm
Bulb: E14 Max 60 W
Voltage: 220V - 240V - 50Hz
Net weight: 0.7 kg (small), 1.0 kg (large)
Spare parts available: Hanging part with 8m. cable, brass decorative side screw, cord grip canopy



Recommended bulb

